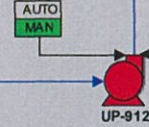
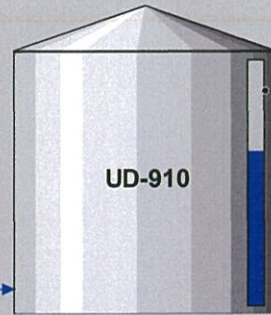
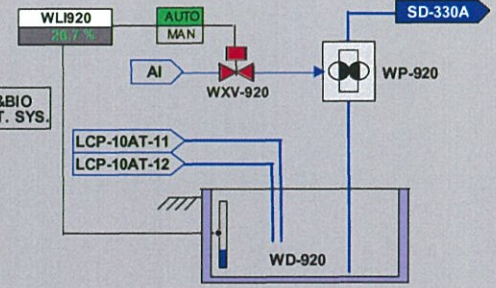
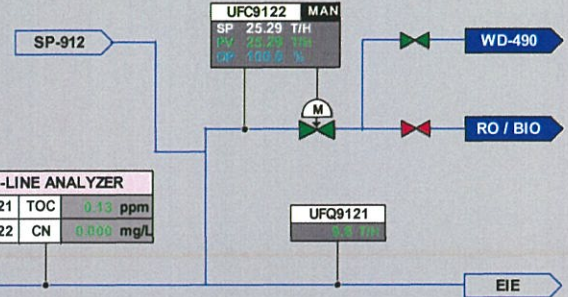


PIT PUMP	PUMP STATUS	PIT LEVEL
AN AREA2-1 AP-962	STOP	17.1 %
AN AREA1-1 AP-942	STOP	14.2 %
MMA AREA MP-950	STOP	30.3 %
AMS AREA MP-970	STOP	35.0 %
WWI AREA WP-912	STOP	15.5 %
OIL SEPARATION ZP-932A ZP-932B	STOP	STOP

PIT PUMP	PUMP STATUS	PIT LEVEL
AN AREA2-2 AP-932	STOP	11.7 %
AN AREA1-2 AP-952	STOP	13.4 %
ACH AREA HP-922	STOP	8.9 %
AIR COMPRESSOR MP-980	STOP	20.5 %
TANK YARD TP-912	STOP	12.8 %



ON-LINE ANALYZER		
UA9121	TOC	0.13 ppm
UA9122	CN	0.000 mg/L



ตัวอย่างผลการตรวจวิเคราะห์คุณภาพน้ำฝน บริเวณ UD-910

AN/RO/BIO									
UD-910(27)									
SAMPLE NAME	SAMPLE POINT	SAMPLING DATE	SAMPLE ID	BATCH NO	RELEASED DATE	Appearance	pH	COD(Gr)	T-CN
						Appearance	pH	COD(Cr) (mg/l)	T-CN (mg/l)
UD-910	UD-910	30-06-2020 17:00	SI2006-2232	20200630-003	30-06-2020 20:49	Pale Yellow	7.2	35	0.025
UD-910	UD-910	28-06-2020 05:00	SI2006-2030	20200628-001	28-06-2020 09:06	Pale Yellow	7.5	28	0.019
UD-910	UD-910	23-06-2020 17:00	SI2006-1720	20200623-002	23-06-2020 20:33	Pale Yellow	7.7	59	0.020
UD-910	UD-910	17-06-2020 16:00	SI2006-1260	20200617-002	17-06-2020 22:24	Yellow	7.2	25	0.049
UD-910	UD-910	15-06-2020 16:00	SI2006-1116	20200615-003	15-06-2020 20:40	Pale Brown	7.8	52	0.089
UD-910	UD-910	10-06-2020 17:00	SI2006-0753	20200610-001	10-06-2020 21:42	Pale Yellow	7.2	39	0.057
UD-910	UD-910	07-06-2020 17:00	SI2006-0534	20200706-001	07-06-2020 20:32	Pale Yellow	7.2	46	0.043